

The Portuguese Water Dog Club of Great Britain

• established in 1989 •



*Year Book
2005*

Index

Secretary's Report	2
Chairman's Report	3
Treasurer's Report and Accounts	4
Top Dog awards 2004	7
Annual Points Trophies	8
Summer 2005 show results roundup	9
The Portuguese Water Dog by Trish Gilpin	11
Books of Interest	13
The PWD Standard by Rachael Reddin	13
A Brief History of the PWD in the UK by Trish Gilpin	16
Showing in Europe by Sue Tweedle	18
Pets and Poisons	20
Water Trials for PWDs by Jayne Johns	21
Working your PWD by Richard Curtis	23
Me and my Portie by Carole Keight	24
Report of the Mongraflca, Estoril 2005 by Nicky Bradley	26
It seems to me... by Ruth Bussell	28
Report of the American Speciality 2005 by Pat Jones	29
How I got started by Rachael Reddin	32
Club Judging Lists	33
Members Adverts	34
Membership Directory	52

The opinions expressed in this year book are those of the individual contributors and do not necessarily reflect the views of Committee or membership of The Portuguese Water Dog Club of Great Britain. All articles are subject to copyright and may not be reproduced in any form without the written permission of the Club.

Officers and Committee 2005

- Patron:** Mrs Carla Molinari
- Hon. Life President:** Mrs Ferelith Somerfield
- Hon. Vice Presidents:** Mrs M Hathaway, Miss P Gilpin
- Chairman:** Miss P Gilpin, 11 Greenhills Close, Rickmansworth, Herts, WD3 4BW. Tel: 01923 350815, email: glenwhinPWD@tiscali.co.uk
- Secretary:** Mr A Stevens, Whistbrae, Preston New Road, Samlesbury, Preston, Lancs, PR5 0UP. Tel: 01772 877296, email: a.b.s@tesco.net
- Treasurer:** Mrs R Reddin, Nutwalk Farm, Broadgate, Sutton St James, Spalding, Lincs, PE12 0JT. Tel: 01945 440431
- Committee:** Mr A Sword, Mrs J Johns, Mrs C Green, Miss N Bradley, Mr G Woodcock, Mrs E Saxton.
- Subscriptions:** Single - £6.00
Joint - £9.00
Subscriptions due 1st January 2006 and should be sent to the Hon. Treasurer. Cheques should be made payable to 'The Portuguese Water Dog Club of Great Britain'.
- Dates for your diary:** AGM and Open Show - Sunday 26th March 2006, Yelvertoft Village Hall, Yelvertoft, Northants
September Open Show - Sunday 24th September 2006, Yelvertoft Village Hall, Yelvertoft, Northants

Secretary's Report

Well now the boot is on the other foot and the Newsletter editor is pushing me for a report for the Newsletter.

As usual March saw the A.G.M. followed by the Club's first show of the year. There was a good turn out and a number of changes to the Officers and committee members of the Club. Helen Irving, as retiring Secretary, was presented with a Skye Terrier sculpture which was well received. Helen has not got away completely as she kindly agreed to take entries for the September show, produce the catalogue and act as Secretary for the day as I had already booked my first trip to the American Speciality.

It has been a hectic first few months in office as the Kennel Club have notified the Club that the breed are to be awarded Challenge Certificates in 2007 and the Club have been allocated a set of certificates. Arrangements are already being made for this and the date for your diary is 30th September 2007 at Tomlinson's Canine Centre, Ratby Lane, Markfield, Leics. just off junction 22 of the M1. Whilst the date still seems ages away I am sure that it will creep up on us all too soon.

A judge's training day was held in June which saw a good mix of both Club members and non-members, all keen to get those all important ticks in boxes now required by the Kennel Club for inclusion on judging lists. The morning session was given by a Kennel Club accredited trainer followed by an examination. I have not heard of any failures so, hopefully, all of you that took the exam passed. Lunch was provided by Jayne Johns and a band of helpers and was very well received.

The afternoon consisted of a breed seminar presented by Rachael Reddin and, for those not exhausted by the morning's challenges, a hands-on assessment test by the accredited trainer.

Jonathon and Jayne Johns again opened up their house to host the annual match between PWDs and the Bouviers. I was unable to attend as Windsor was the day after so do not have the results of the match. I am assured, however, that all present enjoyed the event. I do feel that the Club is fortunate in having members that are prepared to do this as there is a lot of organisation and stress involved so thanks to both.

I am getting a few enquiries for puppies so, if you have puppies available at any time, let me know the details in order that I can refer prospective buyers.

All that remains is for me to wish all members a Merry Christmas and an enjoyable 2006 with your dogs.

Alan Stevens

Chairman's Report

When I sat down to write this, I felt unsure what I should write, but recognised the honour to be required to do so as the Chairman of The Portuguese Water Dog Club of Great Britain.

The year began with a very well attended AGM in March was made especially poignant by the resignation of Helen Irving, who has been the Club Secretary for so many years. It was also hard to say farewell and thank you to Pat Jones who has been Chairman of the Club since it first became reality, although like Helen she is still around to provide support which is invaluable.

Both have been and will continue to be stalwarts of the breed, active not only in the UK. Their experience and contribution to the breed cannot easily be forgotten.

Alan Stevens has a hard act to follow as the new secretary, as have I as chairman.

Other new members of the Committee are Nicola Bradley, and Estelle Saxon. Nicky has taken over as Editor of the Newsletter, and Estelle bringing her experience and enthusiasm to catering activities.

The breed was awarded Championship Status for 2007 which has certainly concentrated the mind, and introduced many topics which need to be considered. Amongst these thoughts, has been the A3 judging list, which for all in the dog world introduces KC requirements for judges. To this end, the Club ran a very successful Breed Seminar in June, with Rachel Reddin discussing the Breed Standard.

Christina Chapman gave an extremely enlightening presentation on judging, and presided over a question paper on Show Regulations, and a hands-on judging assessment.

A further Seminar being run by the Birmingham Dog Show Society in September for Group Judges will see Jayne Johns talking about the Breed Standard. With two KC nominated assessors, Pat Jones and me as Breed specialist assessors it should be an interesting day.

The Standard will no longer be Interim! Show venues will have to be reviewed! Gone are the comparatively easy days but the decision is made.

A very successful 'fun-day' with a match vs. the Bouviers was held at Jayne and Jonathon's in the summer, which although coinciding with Windsor Ch Show giving classes for the first time still attracted a great many PWDs. Thanks again to the Johns' for their hospitality.

The Breed has continued to make its presence known, in the show ring. Several teams of exhibits have been highly placed at Ch Shows in the Breeders Stakes; puppies have been up there with the best on many occasions and not only at Ch Shows; veterans have been proving that the breed goes on for as long as the handler can manage, and no doubt it will not be that long before Group 1 Working Group is awarded to a PWD. Several PWDs have been successful in the Good Citizens Awards, and Disco has been sought after in her demonstrations of Dancing with Richard Curtis. Congratulations to all.

As the end of the Show Year is rapidly approaching I would like to take this opportunity to wish everyone a happy year end holiday and a rewarding year 2006, and to thank everyone for the support that I have received during the year.

Trish Gilpin

Treasurers Report

Rachael Reddin

The accounts for the year were debated at the AGM and for some the auditing process, was a confusing one, so the accounts were not accepted and only after a letter from the accountant explaining the fundamental principles of accounting were the accounts accepted by the members that attended the AGM. The audit sheet and letter appear elsewhere.

With the advent of championship status the clubs funds are in good form, and although a loss is never welcome the club could withstand it for a short period of time.

A decision was made by the committee to stop the awarding of BOB and BP plaques at the AGM, for all those that win throughout the year, the engraving and purchasing of the plaques was amounting to around £300 per year and the committee felt this could be used better elsewhere. The committee also made the decision not to purchase the calendars this year, last year they only just managed a profit and it was considered too much of a risk to take. Maybe when the club grows this can be looked into again.

The Portugese Water Dog Club of Great Britain

Income and Expenditure Account for the year ended 31 December 2004

Income

Spring Show

Catering	72.05	
Tombola	94.92	
Catalogue Sales	13.00	
Entries	135.75	
Welfare Rescue	22.50	
Donations	44.50	382.72

Autumn Show

Catering	79.50	
Tombola	35.00	
Catalogue Sales	13.00	
Entries	147.25	
Welfare Rescue	93.87	
Donations	144.00	512.62

Membership	473.00	
Fun Day	25.00	
Sales of Goods	946.21	
Interest Received	21.96	1,466.17
		<u>2,361.51</u>

Expenditure

Show Expenses	450.64	
Purchases of Goods (adjusted by stocks)	334.13	
Accountancy Fees	62.28	
Kennel Club Fees	115.00	
Postage and Stationary	75.23	
Engraving	75.00	1,112.28
		<u>1,112.28</u>

Excess of Income over Expenditure £1,249.23

The Portugese Water Dog Club of Great Britain

Balance Sheet as at 31 December 2004

Current Assets

Stock	174.00
Cash At Bank:-	
Current Account	2306.68
Deposit Account	3172.59
Cash In Hand	12.92
	<u>£ 5,666.19</u>

Current Liabilities

Membership in Advance	75.00
Accruals	62.28
	<u>£ 137.28</u>

Net Current Assets

5528.91
£ 5,528.91

Represented by:-

Accumulated Fund

Balance at 1 January 2004	4279.68	
Add:		
Excess of Income over Expenditure	1249.23	<u>£ 5,528.91</u>

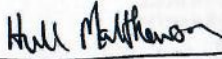
Chairman

Secretary

Treasurer

We have examined the foregoing Income & Expenditure account and certify that the Accounts and Balance Sheet are in accordance with the books, vouchers and information supplied by the Portugese Water Dog Club of Great Britain.

Hull Matthewson
33 Boston Road
Holbeach
Lincs
PE12 7LR


Chartered Certified Accountants

Partners
Stephen Hull FCCA
Julie Matthewson BSc ACA FCCA

Managers

Locations
Richard Stopford FCA

Practices
Steven Adcock ACCA FMAAF

Information Technology
Susan Lewis

Hull Matthewson
Chartered Certified Accountants
and Business Consultants

33 Boston Road, Holbeach, Lincolnshire PE12 7LR
Tel: 01406 423166 Fax: 01406 426626

E-Mail: info@hm-uk.com
Website: www.hm-uk.com



Our Ref: SGH/Z001/arw

1 April, 2005

Mrs R Reddin
Nut Walls Farm
Broadgate
Sutton St James
SPALDING
PE12 0JT

Dear Mrs Reddin,

Re: The Portuguese Water Dog Club of Great Britain

I refer to our telephone conversation earlier this week concerning your committee's query regarding the treatment of Accountants Fees in the Accounts. I can confirm that the treatment utilised is correct and follows correct Accounting principles.

When preparing a set of Accounts one of the principles utilised is the 'principle of income and expenditure accounting' which means that the profit and loss account should always show the amount of the expenses that should have been incurred, i.e. the expenditure for the year, whether or not it has been paid.

Relating the above principle to your Accounts means the following:-

1. Fees of £58.75

As the above fees related to the preparation of the Accounts for the year ended 31 December 2003, this amount had to be shown in the 2003 Accounts, although it had not been paid at that time. To complete the entry it was also shown as an Accrual on the Balance Sheet (amount owing).

2. Fees of £62.28

The above fees relate to the preparation of the Accounts for the year ended 31 December 2004, this has to be shown in the 2004 Accounts, although it has not been paid at that time. Again, to complete the entry it was also shown as an Accrual on the Balance Sheet (amount owing).

I hope that the above now fully clears your committee's query.

Yours Sincerely

STEPHEN HULL
SENIOR PARTNER

Registered as auditors by The Association of Chartered Certified Accountants
Regulated for a range of investment business activities by the
Association of Chartered Certified Accountants

Top Dog Results 2004

The top dog awards are calculated according to the Club Annual Points scoring rules, detailed on the following page.

Congratulations to all of the winners listed below and thanks to everyone who submitted their claims.

Top PWD and Top Male

with 739 points was Johns' Aus Ch Konkaronkon Finnish Dream at Gemson.

Runner up with 612 points was Jones' Cartmel Sea-Goblet.

Top Bitch

with 248 points was Reddin & Bussell's Bregantia Funky Diva.

Runner up with 126 points was Dring and Jones' Cartmel Sea Jewell.

Top Puppy

with 285 points was Green's Gemson Justin at Grandways.

Runner up with 184 points was Sword's Cartmel The Marauder.

Top Veteran

with 130 points was Green's Grandways Firewater at Gemson.

Runner up with 69 points was Green's Grandways Raven Water.

Following is the full listing of results received.

Adults:

1. Aus Ch Konkaronkon Finnish Dream of Gemson (D) - 739
2. Cartmel Sea-Goblet (D) - 612
3. Bregantia Funky Diva (B) - 248
4. Cartmel The Skipper (D) - 219
5. Cartmel Sea-Jewell (B) - 126
6. Cartmel The Bosun (D) - 83
7. Gemson Elinore at Grandways (B) - 75
8. Cartmel Sea-Siren (B) - 61
9. Cartmel Celebration (B) - 25
10. Cartmel Sea Schooner (D) - 13

Puppies:

1. Gemson Justin at Grandways (D) - 285
2. Cartmel The Marauder (D) - 184
3. Cartmel The Artful Dodger (D) - 64

Veterans:

1. Grandways Fire Water at Gemson (D) - 130
2. Grandways Raven Water (B) - 69

International:

1. Aus Ch Konkaronkon Finnish Dream at Gemson (D) - 550
2. Am Ch Downeast Lord of the Rings (D) - 440

Annual Points Trophies

Trophies are restricted to fully paid up members of the club and any person joining or renewing membership after the due date (refer to rules) will only qualify for the points from the date of receipt of subscription by the Treasurer.

Points can only be claimed for awards gained at show in the UK held under KC rules during the year which runs from 1st January to 31st December.

All claims must be made in writing to the Cup Steward by 1st February each year and must include details of name of dog, date and type of show, name of society, awards given and points claimed.

Best of points = BOB, Best Rare Breed, Best AVNSC, Best AV Working.

Best Puppy points = Best Puppy in Breed, Best Rare Breed Puppy, Best AVNSC Puppy and Best AV Working Puppy.

No "Best of" or "Best Puppy" points can be claimed unless an award is declared.

Points at Championship & Club Open Shows

Adults		Puppies 6-12 months	
Best In Show	50	30	Best Puppy in Show
Res Best In Show	40	25	Res Best Puppy In Show
Best In Group	30	20	Best Puppy in Group
Res Best In Group	25	15	Res Best Puppy In Group
BOB (Breed Classes)	70	10	Best Puppy (Breed Classes)
Best AVNSC/Rare Breed	70	10	Best AVNSC/Rare Breed
Puppy			
Res AVNSC/Rare Breed	20		
Best Dog or Bitch	20		
Res Best Dog or Bitch	15		
Stakes Classes	10, 8, 5, 3 (Adults & Puppies)		
1st in Class	5	3	1st in Class
2nd in Class	3	2	2nd in Class
3rd in Class	2	1	3rd in Class

Points at Open Shows

Adults		Puppies 6-12 months	
Best In Show	30	20	Best Puppy in Show
Res Best In Show	25	15	Res Best Puppy In Show
Best In Group	20	10	Best Puppy in Group
Res Best In Group	15	5	Res Best Puppy In Group
BOB (Breed Classes)	10	5	Best Puppy (Breed Classes)
Res BOB	5		
1st in Class	5	3	1st in Class
2nd in Class	3	2	2nd in Class
3rd in Class	2	1	3rd in Class

Points at Group Open Shows

Adults		Puppies 6-12 months	
Best In Show	10		Best Puppy in Show
Res Best In Show	5		Res Best Puppy In Show
3rd Best In Show	3		Best Puppy in Group
4th Best In Show	1		Res Best Puppy In Group

Show Results 2005

Crufts

Judge: Jayne Johns

BOB – Swords' Cartmel The Marauder

RBD – Foster-Ward & Tweedie' Rysalka Moon Devil

BB – Reddin & Bussell's Bregantia Funky Diva

RBB – Fahey & Shire's Ir, Port, Intl Ch Rysalka Moon Mystic

SKC

Judge: Mrs V P Avory

BOB – Jones' Cartmel Sea Goblet

RBD – McGill's Bregantia The X Factor at Winterkloud

BB – Dring and Jones' Cartmel Sea Jewell

RBB – Saxton's Gemson Jezabel at Kimberwae

BP – McGill's Bregantia The X Factor at Winterkloud

Blackpool

Judge: Miss S Tweedie

BOB – Sword's Cartmel The Skipper

RBD – Jones' Cartmel Sea-Goblet

BB – Reddin & Bussell's Bregantia Funky Diva

RBB – Jones' Cartmel Celebration

BP – McGill's Bregantia The X Factor at Winterkloud

SKC (May)

Judge: Mr K S Wilberg

BOB – Johns' Aust Ch Konkaronken Finnish Dream at Gemson

RBD – Sword's Carmel The Marauder

BB – Reddin & Bussell's Bregantia Funky Diva

RBB – Johns' Gemson Kristina

BP – McGill's Bregantia The X Factor at Winterkloud

W&PB of Wales

Judge: Mrs M Spavin

BOB – Johns' Aust Ch Konkaronken Finnish Dream at Gemson

RBD – Green's Grandways Firewater at Gemson

BB – Saxton's Gemson Jezabel at Kimberwae

RBB – Green's Grandways Raven Water

Birmingham National

Judge: Mrs V Stevens

BOB – Jones' Cartmel Sea-Goblet

RBD – Sword's Cartmel The Skipper

BB – Jones' Cartmel Sea-Siren

RBB – Dring & Jones' Cartmel Sea Jewell

BP – Jones' Cartmel Fantasy

Windsor

Judge: Mrs M Hathaway

BOB – Jones' Cartmel Sea-Schooner

RBD – Sword's Cartmel The Marauder

BB – Jones' Cartmel Sea Siren

RBB – Tweedie's Rysalka Moon Diva

BP – McGill's Bregantia The X-Factor at Winterkloud

South Wales

Judge: Mrs P Chadwick

BOB – Jones' Cartmel Sea-Goblet

RBD – Johns' Aust Ch Konkaronken Finnish Dream at Gemson

BB – Tweedie's Rysalka Moon Diva

RBB – Jones' Cartmel Sea-Siren

BP – McGill's Bregantia The X Factor at Winterkloud

Paignton

Judge: Mr R McDonald

BD – Sword's Cartmel The Skipper

RBD – Johns' Aust Ch Konkkaronken Finnish Dream at Gemson

BOB – Saxton's Gemson Jezabel at Kimberwae

RBB – Johns' Gemson Kristina

BP – Saxton & Johns' Gemson Lipidus Kimberwae

NW&PB

Judge: Mr E Hulme

BOB – Jones' Cartmel Sea-Goblet

RBD – Johns' Aust Ch Konkkaronken Finnish Dream at Gemson

BB – Barton's Gemson Florentina Among Auldhelm

RBB – Reddin & Bussell's Bregantia Funky Diva

BP – Bradley's Rysalka Zarzuela

Leeds

Judge: Mr A Butters

BD – Jones' Cartmel Sea-Goblet

RBD – Green & Johns' Gemson Justin at Grandway

BOB – Tweedie's Rysalka Moon Diva

RBB – Saxton's Gemson Jezabel at Kimberwae

BP – McGill's Bregantia The X Factor at Winterkloud

Bournemouth

Judge: Mr J Kirk

BOB – Jones' Cartmel Sea-Goblet

RBD – Johns' Aust Ch Konkkaronken Finnish Dream at Gemson

BB – Reddin & Bussell's Bregantia Funky Diva

RBB – Jones' Cartmel Celebration

BP – McGill's Bregantia The X Factor at Winterkloud

WKC

Judge: Mr J Horswell

BOB – Jones' Cartmel Sea-Goblet

RBD – Tweedie's Sw Ch Aguatelin Duque of Rysalka

BB – Tweedie's Rysalka Moon Diva

RBB – Johns' Gemson Kristina

BP – McGill's Bregantia The X Factor at Winterkloud

Darlington

Judge: Helen Irving

BOB – Jones' Cartmel Sea-Goblet

RBD – Sword's Cartmel The Marauder

BB – Dring & Jones' Cartmel Sea-Jewell

RBB – Saxton's Gemson Jezabel at Kimberwae

BP – McGill's Bregantia The X Factor at Winterkloud

PWDC of GB Open Show (September)

Judge: Miss N Bradley

BOB – Sword's Cartmel The Skipper

RBD – Tweedie's Sw Ch Aguatelin Duque of Rysalka

BB – Tweedie's Rysalka Moon Diva

RBB – Green's Grandways Raven Water

BP – Dring's Yelsek No More Mr Nice Guy

The Portuguese Water Dog by Trish Gilpin

How better to start a feature about this breed than with a well-known and often published photograph of the dog which was owned by Vasco Benuade of Portugal, who along with others influential in preserving this wonderful breed.

Senhor Benuade who owned the Algarbiorum kennels had a carefully planned breeding programme and believed in the standardisation of type, and the ability of the breed to be able to perform the tasks for which it was originally bred.



Photo Benuade Archives

It was Leao on whom the breed standard was based. Leao was born in 1931 and came from a fisherman on the Algarve, and is probably the most famous Portuguese Water Dog ever. (The influence and way that Senhor Benuade saved the breed from extinction is well documented in The Complete Portuguese Water Dog by Braund and Miller published by Howell Book House in 1986 and The Complete Portuguese Water Dog by Carla Molinari).

Strong and robust with an incredible amount of stamina, this intelligent breed was originally owned, and valued by the fishermen of Portugal both as a working member of the crew, and as a trusted and loyal companion.

The KC Interim Breed Standard was adapted from the original PWD and is the subject of the contribution from Rachel Reddin in this feature. The standard asks for a dog whose characteristic is that it should be 'very intelligent and tremendously energetic with great swimming and diving traits' The Portuguese Breed Standard of 1951 used the word Brigao which means stout-hearted and courageous was probably wrongly interpreted as a brawler This might explain why there have been suggestions made that he does not make a good family dog. I am sure from experience that he is extremely loyal and a great stoic but being self-willed and obstinate, needs a firm hand.

All the books that I have read mention the ability of the breed to dive considerable distances below water to retrieve lost tackle, nets etc, and even fish.

Clifford Hubbard in his book Working Dogs of the World (Sidgwick and Jackson 1947) mentions 'The Portuguese Fishing Dog as a breed known for centuries which dived overboard from the Algarve fishing fleets for escaping fish and tackle. Most of the writing about the breed mentions their ability to swim around five miles in warm water, and were well recognised as being 'of superior intelligence'

The breed is reputed to be able to jump from the sea into a boat, although no-one seems to be able to explain how although the why would seem obvious. I for one have experienced this ability when they have been swimming in the canal and can still make it to the tow-path with no difficulty. Perhaps the answer for this attribute is in the neck and body construction 'The former short, straight and strongly muscled' and the latter 'a wide and deep chest with long ribs well sprung, and withers wide and not prominent with a good tuck-up and a slightly inclined croup.

The Standard also requires 'straight and strongly muscled well angulated hindquarters with long and well curved buttocks and strong hocks, straight strong boned and well muscled forequarters with

shoulders muscular and well laid. The pasterns long and upright.



A leap into the sea on command

Although in the UK we have not as yet embraced Water Working Trials, these are well recognised and established in the USA. Further details are included in this feature later by Jayne Johns.

At one time the breed was common along the coast lines of Portugal, but now is more or less restricted to the southernmost regions of the Algarve where its history can be traced back to the fourteenth century or before. The activity of the breed was entirely voluntary, and the breed always reputedly enjoyed it. The PWD was used to carry messages between boat and shore, hence the need for it to be able to swim, and the fishermen tell of attaching cylinders to the dog's necks for this purpose.



A Working PWD (photo: Ria van Middelbaar owner A v.Dijk.)

The above picture illustrates the way the dog holds his head and tail when in the water.

It is worth looking at the other areas of the standard and to try and relate these to the working demands of the dog, aspects which will be covered in Rachel Reddin's article, in this feature.



(photo: Ria van Middelbaar owner A v.Dijk.)

With Challenge Certificates being awarded to the breed in 2007, the moment has come to revisit many of the issues that have caused concern and considerable discussion in the breed. Several areas spring to mind

- What does rectangular really mean?
- What colours and markings are acceptable?
- Should presentation alter? Will scissoring become the norm, or will we revert to the original clip including around the eyes and skull?
- Who will be our choice for awarding tickets if we have the choice?
- What will be the future of the breed in the UK?

What is known is that many of us really care. Since first deciding in 1962 that this was a breed I wished to own, and having seen the effort to save it from extinction I for one know that my spirit is willing to see it go from strength-strength.

BOOKS TO INTEREST THE INTERESTED

- The Kennel Club's Illustrated Breed Standards. Bodley Head; 1989 and later editions.
- Dogs of the World. Dr.Erich Schneider-Leyer, Popular Dogs Publishing Co; 1964.
- The Observer's Book of Dogs. Clifford I.B. Hubbard, Frederick Warne & Co Ltd; 1945.
- The Complete Portuguese Water Dog. Kathryn Braund and Deyanne Farrell Miller, Howell Book House; 1986.
- The Portuguese Water Dog. Carla Molinari; 1993.
- Working Dogs of The World. Clifford I.B. Hubbard, Sidgwick and Jackson Ltd, London; 1947.
- The Guinness book of almost everything you didn't need to know about Dogs. Valerie Porter, Guinness Superlatives Ltd; 1986.
- An illustrated guide to some Rare and Unusual Dog Breeds. John F.Gordon, John Bartholomew & Son Ltd; 1975.
- Portuguese Water Dog. Paolo Correa, Pet Love; 2001.
- The International Encyclopedia of Dogs. Stanley Dangerfield & Elsworth Howell, Pelham Books; 1971.
- The Penguin Book of Dogs. Roger Caras and Michael Findlay, Penguin Books; 1980.
- The Uncommon Dog Breeds. Kathryn Braund, Arco Publishing USA; 1975.

THE PORTUGUESE WATER DOG STANDARD

by Rachel Reddin

General appearance:

The appearance of the PWD is unlike any other dog in the working group and often looks the odd one out in a group line up, he was a retriever and is placed in the same group as Cocker Spaniels in Europe, (Group 8 Spaniels and Waterhounds.)and does not look so out of place, however the PWD appearance can be very misleading, he is a true working dog in every way he will work for a boats crew but also for himself.

First impressions find a slim athletic dog robust and very strongly muscled, the standard asks for a rectangular dog measured from Point of shoulder to point of buttock and from uppermost part of withers to the floor. The Kennel Club's original standard said square however this was probably a misprint and does not appear in any other standards and has never appeared again in the Kennel Club standard. It is well documented that leao was measured when he modelled for the standard and his ratio's were longer than high. Bitches are often slightly longer than dogs so that pregnancy is easier. Some bitches show very little signs of being pregnant right until late pregnancy because they seem to hold the puppies tucked up well under the rib cage.

The PWDs hard penetrating stare is mentioned in the complete PWD by Braund and Miller the fishing waters of the Portuguese fisherman would also include sharks they suggest that the only way a PWD could actually detect the shark's presence was to stare in to the water and thus not dive in and put himself at risk. This may explain why he stares at people watching for the shark that lurks beneath some times they find it and the reaction is one of mistrust.

Characteristics

The ability and will to swim is inherent in the breed, training is seldom needed, however the first PWD that I had would not swim and trying the techniques of the Portuguese fisherman was an option tried, encouragement and coaxing was used and she would not get her precious feet wet, so following the old training methods she was unceremoniously thrown in the deep end, she swam and swam well straight for shore and never swam again. Apparently this didn't happen with the fisherman's dogs once they were thrown in they took to the job and never looked back. The PWD is quite capable of thinking for himself he is intelligent and self willed, they take to the job they are given with complete ease, in the USA water trials are hugely popular, here in the UK we have been slow to put our to put our dogs to work, however I did have one that could herd the goat back into the paddock after it had escaped and he taught himself to do this, I think he new how scared I was of the goat.

Temperament

In 1974 the KC interim standard was accepted by the Portuguese Kennel Club the only phrase to be deleted was 'Brawler by Nature' the PWD is not an aggressive dog and his guarding techniques are a deterrent not an attack, the original standard said 'an animal with a fiery disposition' he is quite able to be playing one minute and the next alerting you to something that isn't the norm, it is quite amazing the vocal range a PWD has and each type of bark, yip or whine means something. Learning their language and speaking it back must be almost as heard as learning Portuguese. They are a slow maturing breed with some dogs not acting like an adult until around 4 years old the benefit to this is you have a dog that can be shown for many years right into veteran and still be able to compete with the youngsters.

Head and Skull

Well this part of the standard probably commands the greatest discussion among breed fanciers; there are the owners who feel this is a head breed and the owners who feel it is the overall balanced dog that is important. The Kennel Club asks for a large head The AKC asks for a strong and wide head and the FCI asks for a Massive head. In the complete Portuguese water Dog by Kathryn Braund she ponders the idea that the word massive could actually been interpreted as impressive. The original Portuguese wording is Bem proporcionada, forte e larga (well proportioned and large head) the head had to be strong and large to accommodate the large brain and to do the strenuous job he was bred for, however a massive head would look out of place and to my knowledge no dogs have ever massive heads.

Eyes

The KC standard says medium and round the eye in fact is the eye and lids are set obliquely, if we look at the wording in the Portuguese standard it states the eye should be roundish the eye neither prominent nor sunken.

Mouth

Scissor bite- Many years ago it was suggested that a level bite should be included in the standard, as it is in the AKC standard, because puppies at the time were being born with level or undershot mouths. To change a standard to suit what your dogs start to look like is not the way to go At the time the move was squashed and has never mentioned again. Vasco Bensusade himself wrote that the mouth should be strong but a scissor bite is most important to prevent damage to fish when retrieving them. The same principle is seen with gundogs, retrieving game. There should be no marks other than the shot holes when the bird is retrieved a dog that mouths or marks the game is considered no good.

Neck, Forequarters, Body and Hindquarters

All these parts of the dog are separated in the standard however when looking at the PWD all these parts flow and join so perfectly that the whole dog has to be viewed to

appreciate the power and elegance of the breed. The dog is certainly muscular in all parts but this should not impede his movement or ability to do a full days work. The back is short and straight creating strength to dive, jump, lift and drag without damaging his back. He should have a noticeable waste line and a slight incline over the croup, his neck is short and carried high the dog's head should never be down. The tail is held up and tips over at the end giving the impression of a ring. The chest is wide and deep. The PWD can swim under water the chest had to be wide and deep to accommodate the lungs. Holding your breath is quite hard when doing a strenuous job but the PWD is quite an expert however unlike the enquiring lady in a car park they are not able to undo knots underwater. As mentioned above each part of the PWD is put together precisely and proportionately, this then means the movement should be free, flowing and elegant, I often think the PWD looks proud of its heritage when moving never being dragged or plodding round the ring.

Coat

The coat is relatively easy to keep, needing minimal grooming as long as it is kept on top of. There is no undercoat. Every standard clearly states two types of coat, the wavy and the curly, in The Portuguese Water Dog by Carla Molinari she states that within these two varieties you also get two sub varieties; my maths makes that four types of coat. One has to assume that the extra two coats mentioned by Molinari are in fact incorrect and should be considered a fault however it is not clearly stated this way. A point to make is that the curly description definitely states that the coat should lack lustre; it is not dull because it hasn't been cared for. A talking point in the breed at the moment is the scissoring of coats; if comments are made and not clarified then damage could be made to a particular part of the breed that could change the appearance forever. It was said recently that the standard says that clipping is confined to certain areas this simply isn't true. In Britain we have tried not to trim and shape our dogs coats however none of the standards approve or disapprove of trimming the coat, although the AKC does allow the retriever clip, which is an inch all over. Certainly looking at the old pictures of Leao he was clipped down a couple of times a year and his coat kept in shape for shows. The hair was clipped almost to the back of the head and the jacket was clipped up to about the 4th rib. Through fashion one would assume, we now have hair over the eyes the jacket is clipped to the 1st rib and coats are getting longer and longer, I often wonder if left in the water for great periods of time would some of the coats get water logged and heavy. Our American counter parts have taken the trimming of coats to the extreme and the retriever clip is very fashionable, it is easy to shape and possibly to hide faults, however in recent years the lion clip seems to be making a come back but this is still trimmed and fashioned with scissors.

Size

From the tallest dog to the smallest bitch the standard allows a five and a half inch difference, the explanation comes from the fishing boats, some had small boats some had large so the dog was basically fitted to the size of boat, one size does not fit all and size definitely counts when it comes to the PWD. The weight is also important this is proportionate to the size of dog. They should never be fat or muscle bound.

Overall the PWD is an athletic dog with a great mind with true working abilities, he should never be overstated. Many of the PWDs being shown in this country still resemble their original forefathers rescued from extinction all those years ago.

Colour

Black, Brown, White, Black & White, and Brown & White. The colour of the Portuguese Water Dog, varies from dog to dog. Many different coloured browns are seen from the lightest (almost apricot) to the deepest (almost black) obviously the weather does have an affect the sun can bleach brown and black but sun bleaching is quite easily determined as the true coat colour shows underneath. Silver is a colour not recognised but surely

needs to be mentioned as it is one of the original colours however it does seem a shame it isn't recognised as the silver PWD can be quite striking. Black & White and Brown & White are often a talking point the standard doesn't call for any particular places for the white however in Molinari's book she does give a guide as no more than 30% white, and that symmetrical markings are not required. The only requirement is that white should always show bluish skin but unfortunately this is seldom seen in black and white dogs. coat colour will always be a talking point and will always be a personal choice but should never be a penalising point

A brief history of the Portuguese Water Dog in the UK

by Trish Gilpin

The Kennel Club library is a great source of information, and it is shown below.

Although there may be records of the breed in the UK prior to those shown they are not easily found and the ones shown start in 1955.

- 1955 April Kennel Gazette Any Other Variety Cao D'agua Gitana Of Tallwood (registered in IKC). Bitch Mrs RJ Wood. Breeder Capt B O'Connor Manuel Da Dinzez ex Jeronyma Rostabal. Dec 6 1953.

- 1955 July Kennel Gazette Any Other Variety Cao D'agua (Long-Haired) importation (Portugal) Guilherme of Tallwood Dog Mr and Mrs RJ Wood Breeder Capt P O'Connor Alfonso ex Isabel de Cervantes April 20 1954. (I think that the B O'Connor is transposed from P O'Connor. The interesting piece here is that the breed is now described as Long-haired, and in later KC Gazettes the breed is split into two, long-haired and curly-haired. This description matches that of Clifford Hubbard in his Working Dogs of the World mentioned earlier and presumably reflects that this dog came from a litter registered in Portugal.

- 1955 October Kennel Gazette Any Other Variety Cao D'agua Bernadina of Tallwood Bitch Mr and Mrs RJ Woods Breeder Owners Guilherme of Tallwood ex Gitana of Tallwood. Also Dolores of T (b), Maria of T (b), Nina of T (b), Pedro of T (d), Perpetua of T (b) and Rosa of T (b). Where they all went is not documented. The coat types

are not separated either presumably the UK KC not having the types separated.

- 1956 March Kennel Gazette Any Other Variety Cao D'agua (Long-Haired) Chibanta of Tallwood (registered in IKC) Bitch Mr and Mrs RJ Wood Breeder Mr Manoel Pimenta Juan IV ex Isabella X Dec 14 1954.

- Rabello of Tallwood (registered in IKC) Dog Mr and Mrs RJ Woods Breeder Mr Manoel Pimenta Antonio II ex Anninha May 20 1955. What is of interest is that the breeder of these dogs sounds to be of Portuguese or Spanish origin, and his dogs may have come from Portugal. Certainly the registration documents are for long-haired Cao D'agua which seems to be a Portuguese description.



A Tallwood dog possibly Rabello

- 1957 September Kennel Gazette Any Other Variety Portuguese Water Dogs Alfonso of Tallwood Dog Mr and Mrs RJ Wood Breeder Owner. Rabello of Tallwood ex Chibanta of Tallwood Also Alexandro of T (d), Amas of T (d), Amello of T (d) Andre of T (d) Aninha of T (b) and Antonio of T (d) March 26 1957. Only Andre is listed as being transferred to a Mr W Ruffino. In

October 1957 an export pedigree is listed for this dog to Italy. The gazette does not state whether he went with Mr Ruffino or was sold to a third party. The breed is now registered as a Portuguese Water Dog and not as Cao D'agua.

- 1960 March Kennel Gazette Any Other Variety Portuguese Water Dogs Bella of Tallwood Bitch Mr and Mrs RJ Wood Rabello of Tallwood ex Perpetua of Tallwood May 18 1959. This would appear to be the last entry for the Tallwood dogs, and there is undoubtedly quite a lot of history around both the breeder and the Tallwood dogs. This might well have been the end of the line for the breed in the UK in the 60s and 70s. The next registrations we will come to later but it is interesting to digress momentarily to the exhibition of the breed at Crufts. The information again comes from the KC Archives

- 1956 Crufts AVNSC. Judge Mr W Madonald Daly. Pedro, Maria, Perpetua, Chibanta of Tallwood were all entered in the Novice Class, and Chibanta (NAF) and Guilherme of Tallwood entered in the Open Dog or Bitch Class. Guilherme was third in the Open class.

- 1957 Crufts Portuguese Water Dogs Judge Mr F Warner Hill. Two classes Graduate D or B and Open D or B. The only entries were from Mr and Mrs RJ Wood, a total of 8 dogs 14 entries. Best Dog was Rabello of Tallwood and Best Bitch Perpetua of Tallwood.



A Tallwood dog taken at Paignton show in the 1950s

- 1958 Crufts Portuguese Water Dogs None entered. Crufts did not have Breed

Classes for the Portuguese Water Dogs until many years later.

Many years pass before the next records in the Kennel Gazette of registrations for the breed are seen although reading Carla Molinari's book about the PWD:

- 1980 December Kennel Gazette Portuguese Water Dogs Importation. Arco do Vale Negro at Glenwhin (d) Breeder Mrs C Molinari, Baluarte do Vale Negro ex Kira 29 Oct 1979. Miss P Gilpin.

Balalaika de Alvalade at Glenwhin (b) Breeder Canil de Alvalade, Ch Yole de Alvalade ex Tamar 12 Nov 1977. Miss P Gilpin.

At the same time there were two importations which do not appear in the KC Gazette. This was probably due to there being a problem with being able to obtain the original registration from the Portuguese Kennel Club.

Devil de Alvalade (d) Breeder Canil de Alvalade. Taro ex Tamar. 04 May 1979. Mrs P Holbrook O'Hara.

Dana de Alvalade (b) Breeder Canil de Alvalade. Taro ex Truta de Alvalade. 25 May 1979. Mrs P Holbrook O'Hara.

There was also a litter born to these two of which four survived, but registration was upheld for a while and then agreed by the KC.

There were later imports. These are not recorded here because the breed enthusiasts know who these were but the initial imports have been influential and had to undergo six months in quarantine. Devil and Dana moved to Miss P Jones from Paddy Holbrook O'Hara and were the initial Cartmel PWDs from whom many of the present day PWDs are descended.

Others who have imported PWDs are Shireen Humes (1); Ruth Bussell (1); Jayne Johns (2); Sue Tweedie (1).

In The Complete Water Dog by Braund and Miller there is a photograph of the first PWD owned by Sonja Santos (Do Mar kennels) who was from English breeding. She is a white bitch named Fado and never produced offspring.

SHOWING IN EUROPE

by Sue Tweedie



Since the introduction of the Pets Passport Scheme in 2001, showing in Europe has become a viable option for the British exhibitors. Several have taken up the challenge, and overall the British dogs have proved their worth against the European dogs gaining National and International titles. The first to be shown in Europe was Gemsons Alexis at Glenwhin who won a Res CAC & RCACIB at Amsterdam Winners Show November 2000 but our biggest triumph to date was at the World Show 2001 in Oporto, where Ir Ch. Rysalka Moon Mystic at Bentarsna went best female and Rysalka Pirata won Res CAC and RCACIB. Moon Mystic became the first British bred (and is still the only non-Portuguese or American bred PWD) Portuguese Champion.

EUROPEAN SHOW SYSTEM

In Mainland Europe the PWD is classified in Group 8 (Retrievers - Flushing Dogs - Water Dogs), a group which is more Gundog orientated than the British Working Group. There are two levels of

shows where championship titles can be gained, National and International Shows. Both offer all breeds the National CAC, with the FCI CACIB's also offered at the International shows. Each country has their own requirements to become a National Champion, usually 3 CAC's. FCI International Champions must win 4 CACIB's in three countries, with at least 1 year between the 1st and the qualifying CACIB. No CACIB can be awarded to a dog less than 15 months.

Breed classes normally consist of Puppy, Junior, Intermediate, Open and Champion, with dogs only being eligible for 1 class per show. Each dog is graded, and only those graded 'Excellent' ('Very Promising' if a puppy) can be placed in the class and win any further awards. The CAC can only be awarded to non-champions, but the CACIB and Best of Sex can go to either the CAC or the Champion Class winner. Judges frequently withhold the 'Excellent', even from Champions.

A Critique is written for each dog, and is collected by the exhibitor after the completion of judging, but is not published in any paper.

THE PWD IN EUROPE

The PWD is slowly gaining popularity in many parts of Europe, especially in the Netherlands and Scandinavia, as well as its home country of Portugal. The quality of many of these dogs is high, with several winning and being placed in Group competition.



Portugal is the homeland of the breed, and dogs can be registered on both the RI (Development) and LOP (Breed) register. In the last 5 years, a total of 809 PWD have been registered - 107 on the RI and 702 on the LOP. The breed club (APCAP) holds both breed shows and water trials. The majority are Portuguese bred, although there have been some American imports in recent years. Sweden and Finland have a

strong interest in the breed, mostly based on dogs from Portugal and a few imports from the Cartmel and Glenwhin lines, and more recently from America. The competition is good, and entries of over 25 dogs are not uncommon. The Swedish Kennel Club publishes the registration details and major wins at shows on its website - this is a valuable tool when tracing pedigrees.

The Netherlands and Denmark PWD are mainly from American stock, with few dogs being of pure Portuguese lines. There is a higher proportion of white markings in these dogs, and the presentation appears to be influenced by America, with scissoring and shaping much in evidence. The current Portuguese APCAP standard is being amended and will state subject to confirmation that white markings be no more than 30% and a full white collar should be penalised.

Other countries which have a nucleus of PWD enthusiasts include Norway, Switzerland, Germany, Italy and even Czechoslovakia.

The future of the breed in Europe is looking positive. With the advent of the pets passport and easier international travel, breeders and competitors from all over the world are working together to ensure the future of the PWD.



NWB 1989, our first breed classes at a UK Championship show.
Photo: Alan V Walker

Pets and Poisons

.....Vine Fruits

It is a little known fact that vine fruits are toxic to dogs and can be fatal if ingested in sufficient quantities. There have been several articles on this subject in the canine press during 2005 and here is a quick summary of the known facts on the subject.

All types of vine fruits appear to be implicated; fresh grapes and dried fruits such as raisins, sultanas and currants seem to be equally toxic to dogs. The mechanism of damage is not fully understood nor has the toxin involved been identified, but the result of ingestion in sufficient quantity is kidney damage or in the worst cases, renal failure leading to death. Sensitivity to the toxin appears to vary between dogs and a dose that may make one dog unwell may be sufficient to kill a more sensitive individual.

The ASPCA Animal Poison Control Center in America reported that from April 2003 to April 2004, they managed 140 cases, each involving one or more dogs that ingested varying amounts of raisins or grapes. Of these cases, over 50 animals developed clinical signs ranging from vomiting to life-threatening kidney failure, and seven dogs died.

The APCC is still unable to determine the cause of renal (kidney) failure. Possibilities include 1) an agent in grapes and raisins themselves; 2) fungicides, herbicides, or pesticides contamination; 3) heavy metals; 4) high amounts of Vitamin D; or 5) fungus or mould contamination.

Much is still yet to be discovered about the toxic principle associated with grape and raisin ingestions, as well as the exact mechanism leading to kidney damage in some dogs. It is also not clear if only canines are susceptible to developing a toxicosis, and additionally if only certain dogs are affected, or if chronic, long term ingestions can lead to the same effects as large, acute or single ingestions. As there are still many unknowns with the toxic potential of grapes and raisins, the ASPCA Animal Poison Control Center advises not giving grapes or raisins to pets in any amount.

They advise that if you suspect your dog has eaten a large amount of raisins or grapes, take your dog to a vet immediately. Your vet should initiate decontamination measures, and administer fluids and/or dialysis to assist/restart the dog's kidneys. You should be aware that initially some vets may suspect rat poison as the above symptoms are very similar to the symptoms associated with the ingestion of that substance.

Vine fruits are just one of a number of human-safe foods which can be fatal to dogs, such as chocolate and onions. For more information on this subject, you can follow the links below.

Pets and Poisons (www.ThePetCenter.com)

Human Foods That Poison Pets (www.Petalia.com)

Animal Poison Control Center (www.aspca.org)

WATER TRIALS FOR THE PORTUGUESE WATER DOG

by Jayne Johns



The Portuguese Water Dog or Cao D'Agua to give it the correct name WAS a true working dog.

Bred and nurtured by the fishermen of the Algarve to work alongside the crew in the fishing boats, their tasks were many fold and each dog had to work as part of a team and also have the intelligence to problem solve on his own. The dogs were used to retrieve from the water, drag in nets, carry messages from boat to boat and from boat to shore. The dog was also the guard for the boats when on shore.

Today the work for the dogs has disappeared with the arrival of radio and mechanisation but the Portuguese Water Dog Club of America was determined that the heritage of the breed should not be lost and from as early as 1972 owners were doing informal water training with their dogs.

In 1986 the Water Work Committee Chaired by Ginny Dorsman proposed a Water Trial.

It was to be many years before the proposed Trial tasks were agreed and put into action but in February 1991 the Trial was approved.

I have been to the American Specialty many times for a week long extravaganza of PWDs but my favourite part - to watch the dogs doing the work they were bred to do. Their enthusiastic happy faces waiting eagerly to be directed in all sorts of tasks. The trials have a logical progression in which the tasks grow in complexity from Junior Water Dog through Apprentice Water Dog on to Working Water Dog Courier Water Dog and finally to Versatility Water Dog.

Junior

- Exercise 1- Retrieve Dummy from shore,
- 2 - Board Boat and ride with Handler,
- 3 - Call dog from shore to boat,
- 4 - Measured swim with handler.

Apprentice

- 1 - Under water retrieve,
- 2 - Retrieve Dummy from shore,
- 3 - Dummy carry boat ride and recall to shore,
- 4 - Retrieve floating line from shore,
- 5 - Measured time and distance swim.

Working

- 1 - Gear Bag Retrieve,
- 2 - Retrieve dummy from boat,
- 3 - Retrieve overboard articles,
- 4 - Retrieve dummy between two boats,
- 5 - Blind retrieve of floating line from boat.

Courier

- 1 - Courier pouch exchange,
- 2 - Blind retrieve of floating line - shore to boat,
- 3 - Directed double retrieve from boat,
- 4 - Retrieve fishing net,
- 5 - Buoy ball placement (this is the hardest exercise for a retrieving dog as it requires the dog to swim out to a set distance with the buoy, drop on command and return to the boat.)

Versatility

Is a combination of any of the above tasks chosen by the judge at random on the day of the test.

Tasks were set that reflected the work the original dogs had to do on the boats in the Algarve. The Portuguese Water Dog IS a true working dog. You only have to watch a water trial to see this.



Ariett vanDijk's Zigane
Photo Ria van Middelbaar



Two of the original imports brought into the UK by Trish Gilpin in 1979.
Arco do Vale Negro (left) and Balalaika de Alvalade (right)

Working your PWD

by Richard Curtis

The PWD is a very exuberant breed which is also highly intelligent which can mean it can easily get itself into mischief!! So it is important to put their brain to good use in one of the many dog sports that are now available.

My own Portie Disco, competes in obedience and Heelwork to Music plus dabbling in a bit of agility just for fun. Having had collies before I didn't know what to expect with the PWD but I have been amazed at their high intelligence level. Disco learnt many complex moves for her freestyle routine in only a few lessons. The problem comes when you want to practice a move a few times, as with many breeds other than collies they "turn off" if asked to do something more than once. This means that you have to keep their training very varied and always have that element of surprise in a session to keep that interest. Taking these factors into consideration when I trained Disco for her first freestyle competition earlier this year, I could not spend long periods of time going through the whole three and a half minute routine. I had to rely on her being well trained in the moves and that she would perform them on cue but always being ready to improvise!!! This proved essential as Disco decided to start to pirouette at the very start of the routine when she should have stood still!! The good thing about Heelwork to music for the PWD is that no one knows what you have planned so they think it is part of the routine. I was very pleased that Disco won her class beating some good dogs and is the first PWD to win in freestyle in the UK.

Obedience is a little different for the PWD as in freestyle you can use that "down" attitude that the Portie has to



its advantage but in obedience it has to be a bit more serious, not really a word this breed knows. Obedience has become a very precise sport with the domination of the collie so a lot of work had to be put into Disco to keep her motivated during the ring work. Attention onto the handler is another important factor for both sports which a lot of work has to be put into from a young age.

Agility is a sport which most dogs love and Porties are no exception. The breed is naturally quite agile and fast so has no problem in getting the height on the jumps. Agility is also good for PWD as it gives the dog an outlet for all the energy that the breed has.

Disco is great fun to work with and her "happy go lucky" attitude means very few things unsettle her and no matter what she is doing she is always a big hit with the crowd. The breed is excellent for those people who want a fun working dog as well as a good companion.

Me & My Portie

By Carole Keight

Nothing quite prepares you for owning a PWD (for the uninitiated, a Portuguese Water Dog), affectionately known as a 'Portie'. The whole experience can be a shock to the system!

Having been in Gundogs for years I decided to have a change, have something completely different, a Portie seemed a good idea. After extensive research via books, the web, breeders and people 'in the know', I threw caution to the wind and put my name down for a puppy. I even went to Crufts to see a Portie in the flesh just to make sure I was making the right choice. Just the job I thought, definitely different.

The arrival of the pup was drawing near; I had kept in contact with the breeder for several months to check on progress. Apparently he was a fabulous puppy, a good 'doer' and very correct in every way. The pick-up day dawned so off I went to collect my little bundle of joy. When I first saw him I was amazed at how big he was and how heavy he felt, no the small and shy puppy I was expecting. No sooner had we set off for home and he threw up in the car, all over my son, after that he just settled down in the well of the care and promptly went to sleep. Once home after a quick bomb around the kitchen and a hello to my two Labs he decided enough is enough and he curled up in his crate, this puppy is going to be a breeze I thought, who was I kidding! Day two dawned and the pup quickly settled into the routine of the household, he was no trouble at all; he ate, played and slept. Day four he promptly tried to assume his place in the pecking order of the house, that place, you guessed it 'Top Dog'. I knew immediately that I would have to address that and pretty quickly too.

One dog crate, one car crate, one soft crate, one dryer/blaster, one posh leather show lead, one grooming table a various brushes, combs, coat conditioners etc. later I am one year on with my Portie. I am sure my Labs only needed a slip lead and a brush but there you go, you live and learn.

When I look back I was totally naïve about owning a PWD, it's almost like having a precocious child, you know the sort, "I've done that, I can do that, I know what I am doing, I know best."

Life to a Portie is one big adventure after another, each new day brings new challenges, new ways to be naughty and new ways to drive mother mad. The word 'No' means absolutely nothing to a young PWD but I have a cunning plan to solve the problem, distraction. It's a marvelous tool when it comes to discipline. Even though my Portie knows each of his toys by name and will also retrieve them on command I have learned in the discipline department a young Portie's attention span is approximately 30 seconds. In other words you have a window of a few seconds to do any type of training, anything beyond that and it's "I'm bore with this, what can we do now." I did try ringcraft but my Portie thought it was a marvelous opportunity to play with his friends and generally show mother up. All the other dogs there seemed so well behaved; it was a waste of time and no good for us. It all goes back to the short attention span thing, a young PWD's job is to enjoy life, not stand and be poked and prodded by some stranger, oh no. Sometimes even when I am really cross with my Portie and I feel that he is never going to behave he just has to look at me from somewhere inside of that heavy fringe and I just burst out laughing. If I do have to discipline him he knows that he makes me laugh so I have to turn my head away, he is no fool.

There are many facets to a Portuguese, each day I learn more about them just by observing their behaviour and the way they deal with everyday ups and downs. I am sure

there are numerous other breeds that display the same or similar traits as Porties but I feel that these dogs are truly unique. This breed seems to possess a heightened sense of intelligence, they problem solve and work things out, in fact they seem to thrive of difficult and challenging situations. I sometimes test my Portie with a task that needs to be 'thought about' - nothing too difficult as he is still young. When he sets out to solve the task you can almost see him working it out using his brain to work out the best and quickest way to successfully complete what has been asked of him, it's almost uncanny. A Portie is never better than when he is working for his master, it makes him happy, he is so eager to please, it's almost as if he is there to serve, it's his job. The breed is totally devoted to their owners and will be by their sides at all times. Even as I write this my little chap is under the desk at my feet (or is he chewing the computer cable? He's very quiet) they like to be close to you.

Through owning a PWD I have stumbled into the world of showing, that's been a learning curve I can tell you. Having competed with horses all my life I thought this showing lark would be easy. Wrong!! Looks easy doesn't it, showing a dog, nothing to it, I told myself, just a quick look and a run around the ring. Easy, well, a lot easier than Dressage or Show Jumping which is what I'm used to. Novice dog, novice handler - not a good combination really but to be fair I have had loads of advice, help and encouragement from all sorts of people in the showing fraternity and not all Portie people either. I am sure they could see that I was fumbling in the dark, so to say. On only our second show an eminent judge awarded my boy Best Working Puppy and also Group One so we couldn't have been that bad but here's the rub, in his critique after saying fabulous things about the puppy he wrote "...the handler would do well to hide her nerves...", so there you go, great dog shame about the handler. I must say that since then I have almost conquered my nerves, in fact I really enjoy the actual showing of the dog, it's the political aspects of showing that I cannot understand or condone but I will not go there.

I know that a PWD is not the breed for everyone, they need understanding and in return they reward you with their loyalty and their love. They are also a high maintenance breed due to their profuse coat. When the coat is groomed regularly and kept in top condition it looks wonderful but when it is left with only a quick brush through it looks absolutely dreadful. If neglected it can take months to get the coat looking good and healthy again, you may as well clip it all off and start again. When PWD's go through the junior moult, it's a nightmare, you can comb the dog right through in the evening and the following morning it's all felted up again, this can go on for quite a while, so I am told. I will be really relieved when my boy's moult is over, so will he I am sure, all that brushing and combing gets very tiring for a young Portie.

Their energy level is boundless, no sleeping after a walk, on returning home my Portie looks at me as if to say "what are we going to do now?" There you are exhausted ready for a nice cup of tea and at your feet is this little dog with the big eyes waiting for some more action.

I have certainly learned a great deal about canine behaviour since owning a PWD and I am certainly a lot fitter.

I am looking forward to the remaining shows of the season and I hope the judges will see a well constructed, happy, healthy dog in the ring (ignore the handler), a little dog of truly unique qualities.

The new friends I have made in the breed have helped me enormously and without their advice and encouragement my Portie and I would not have had such a successful and fulfilling first year.

Once again, a big 'Thank You' - you know who you are.

Mongrafica, Estoril 20th August 2005

by Nicky Bradley



It was with great excitement that I set off for Estoril this summer to attend my first Mongrafica with travelling companions Trish Gilpin and Brian Ruggles. We arrived at Lisbon airport on schedule and survived the hairraising taxi ride from the airport to Estoril.

The Mongrafica is the national specialty of the APCAP (Associação Para A Protecção do Cão de Água Português) and is the equivalent of our club show. What makes it different from our show is that it is held during the 3 day Estoril championship show using the same facilities. Several other breeds were also holding Mongrafica on the the same day. This 'cluster' type arrangement is common in the USA and Scandinavia where small clubs regularly share facilities with larger ones, but is virtually unknown in the UK.

The judge for the Mongrafica was Mr Luís Catalan, who is a Portuguese national. Judging was scheduled for the late afternoon and people and dogs magically appeared from nowhere at the appointed time. The whole thing was very relaxed and the breed is obviously very popular with the general public as quite large numbers of people stopped by the ring to watch the judging and take photos.

Although the entry at the Mongrafica was not particularly large, it was interesting to note that all the dogs present exhibited strong breed type and 'looked like Portuguese Water Dogs'.

Best in Show was Isabel Santos' Globetrotting Multi-Champion Smooth da Pedra da Anixa and Best Opposite Sex was the Oliveira's veteran brown bitch Xica Marota do Vale Negro.

We were treated with great hospitality by the Portuguese exhibitors and thoroughly enjoyed our visit. I for one, will definitely be going back in the future.

MONGRAFICA 2005



Multi Champion Smooth da Pedra da Anixa in action at the Mongrafica (above). A scene from the show (below). Photos: Brian Ruggles



It seems to me....

In 2007 we will have CCs giving our breed championship status. As a consequence people might feel the Kennel club require changes to our interim standard, the Kennel club do not require any changes. Our standard has served us well for the last twenty plus years and liittle needs to be changed. Certainly some parts need clarifying, but not, I feel, altering.

Over the years I have heard many breeders/owners, justifying faults on their dogs with the reasoning that the standard needs to be changed, but my own observations would have to be the opposite, if a breeder consistently produces dogs that have faults then the breeder needs to look at changing their lines to suit the standard and not the standard to suit their lines.

I understand the committee are reviewing the standard but as yet do not know what they have come up with, I look forward to reading their proposals and reasoning behind any changes.

Change for changes sake is a change for the worse.

Ruth Bussell



Congratulations to Bispo (left) and Rio (right) and proud owners The Robson's on gaining their Kennel Club Good Citizen Bronze Awards in August this year. The boys are from Shaun and Donna Dring's litter born on 11th January 2005, so this was an excellent achievement at just 7 months. By the time you read this, they will have started training for their Silver Awards - we wish them luck.

The American Specialty September 2005

By Pat Jones

A semi-relaxing day at Darlington started the weekend, followed by a 7? flight to the USA on the Sunday. Temperatures were somewhat different from the 60 degrees at Darlington to the 85-90 degrees in Maryland.

The venue was superb. First class hotel, acres and acres of lake, acres of land and a backdrop of acres of forests. All that plus good friends, a huge selection of dogs, and a dog show that started judging at 7 am - YES - 7 am in the dark, such was the entry.

I enjoy seeing dogs that have my breeding behind them, or that I have been involved with, but this is a brilliant, albeit an exhausting week for anyone water dog orientated.

The attitude of both spectators and exhibitors is excellent - much applauding and encouragement in all classes - if only it was the same in all countries.

The judging tends to finish mid-afternoon as so many activities are planned for the evenings, including 2 boutique nights (stalls to you and me), where different WD clubs sell various things for their own clubs. Great variety with something water dog for everyone.

Live and silent auctions bring in vast amounts of money, and cause great excitement. One item was a basket containing memorabilia of 'Charlie Brown' (Am Ch Charlie de Alvalade), the first big winning dog to be imported into the US. This basket contained a photo of a young and old Charlie, some of his 1st Rosettes and much more and fetched an incredible \$3,000. Another selection of the first issue of the Courier and other lovely items raised \$1,600. So now folks there's a good idea to raise money for the club.

There was a lecture on Juvenile Dilated Cardiomyopathy by the two lady scientists involved in the research. They were very approachable and questions were readily answered. Also



Contrasting presentation styles at the American Specialty. PWD's in Working Retriever Clip and Lion Clip. Photo: Alan Stevens.

present were 2 Water Dog cross Beagle puppies. Very outgoing as normal pups. This is a part of the research into Cardiomyopathy and many cross pups have been bred and placed in homes. I have the paperwork given out at this lecture if anyone would like to know more about the problem.

Talks on Clicker Training and a professional handler giving tips on grooming and presentation were two more well attended items.

A health tent was on site for dogs wanting CERF tests on Monday. There was also an Optigen clinic which required a blood sample. Vast amounts of blood was only a dream for the researchers into Hermangio Sarcoma. Unbelievably 310 dogs donated, which

totally surprised the technicians who drew blood on 2 days.

There were many stalls with a variety of products all PWD orientated – but you would need a healthy wallet!

The water trials took place on the first weekend. Very well supported, with a good competitive spirit, it really was a great spectacle and at least one of the Brits showed interest in trying at home. Maybe that could be a story for next years newsletter.

The judging was varied, as there were four judges who saw things differently, but that happens everywhere. Highlights for the Brits was to see a Swedish dog CASA HOYAS DAREDEVIL GRIFFIN winning Winner's Dog with the Portuguese multi-titles SMOOTH



Winning dogs at the American Specialty.
Photo: Alan Stevens

DA PEDRA DO ANIXA standing second. What an excellent result at such a prestigious show. All the dogs had a lot of moving to do in a temperature of 80-90 degrees.

All the classes had good selections of quality dogs and to me it was interesting to see the dogs and their progeny that I had seen two years ago. One of these was Am Ch Akira Supa Chunky Monkey, A.K.A. Gorilla. I was very impressed with here as a puppy and to see her now, matured having a great week. She won Brood Bitch with her two bitch puppies (who were clones of her), the pups won Puppy Bitch 9-12 mths, and 1st and 3rd in Sweepstakes 9-12 months. Gorilla herself went on to win our equivalent of Open Bitch and Best Bitch in Show.

Best in Show for the 3rd year running was Marilyn Rimmer's Am Ch QUESTARS THUNDER AND LIGHTNING. What a feat, at such a show, with such colossal entries 'Rascal' did it again. My personal 'Best View' of him was at the dinner on the Friday evening, when a silver platter was delivered to him and he thoroughly enjoyed a steak dinner – not too keen on the carrots though!

There is a title of 'Superdog' given to the dog/bitch gaining the most points over all the days, where the dog must be entered in at least 3 of 5 areas of competition. This recognises the overall versatility of the WD and is an award most people only dream about. Having recognised this particular bitch's brilliance I was thrilled to see 'GERT', HUNTERS GARTY GIRL owned and trained by Paula Stevens win the much prized trophy.

An early winner of the 'Superdog' was 'DUTCH' Connie Millard's wonder dog. Dutch was always brilliant but came to the public's eye when working at the Twin Towers disaster. Although now semi-retired, he had been with Connie and 'SPIDER' (sired by my own Cartmel Sea-Admiral) at the disaster that the US has just suffered. 'Spider' has been very busy and had played a vital role for over 2 weeks. They were to leave from the specialty to go back to the worst hit hurricane areas to search again. Good luck boys.

There were many donations handed in to help swell the funds and help those needing a chance to stay alive. One such donation was organised by Jayne Johns.



Best Veteran at the American Specialty
Photo: Alan Stevens

How I got started

I'm an ex junior handler, Today juniors are encouraged to succeed in more areas and offered so much more help and encouragement. When I was a junior it was an extra class open shows put on and entries were often taken on the day, quite often the cute girl with the oversized dog won however the competitiveness was as it is now very strong. Then the classes were few and the entry figures were high qualifying for Richmond was certainly a long and nerve-racking process.

The first class I ever entered was in junior handling I had gone to the local show on my skates and not taken my shoes, so with my brothers dog and bare feet I entered the ring, when I won I was hooked, David (my brother) went in the older handling class and was unplaced I don't think he ever forgave me for this and competitiveness between brother and sister was sealed.

You could say my win was a fluke or you could say I was a natural which

ever that win made my day and made me all the more determined to do better the next time I borrowed my brothers dog which funnily enough never happened, instead I got my own dog.

I often think that if Joshua and Byron could win that all important first class then maybe they would be hooked, or maybe they will be like many other children born to dog showing folk and be more interested in other activities. Joshua has had a go at showing but at the moment he finds the porties rather too much to handle, I started with cockers a much more sensible breed. Byron does have the ability to get them to do what he wants but he would rather kill the dragons and dinosaurs that lurk around the ring.

So hopefully in a few years I may be writing about how Joshua and Byron got started and of the one thing that got them hooked or maybe I will be going to shows on my own and will be writing about something completely different.

Rachael Reddin



An Agility competitor at the American Specialty
Photo: Alan Stevens

Club Judging Lists

A3 List

This list comprises of people who, in the opinion of The Portuguese Water Dog Club of Great Britain, are fully competent to award challenge certificates in the breed but are not yet approved by the Kennel Club.

NAME

Ashmore Mr. C
Bonos Mrs. P
Chadwick Mrs. P
Dowse Mrs B
Gilpin Ms. P *
Hathaway Mrs. M *
Hulme Mr. E
Irving Mrs. H *
Johns Mrs. J *
Jones Miss P *
Molinari Mrs. C *
Reynolds-Frost Mr. B
Stevens Mr. A *
Stevens Mrs. V *
Thorn Mr. T
Thorn-Andrews Mrs. Z
Wight Mr. A
Woodcock Mr. G *

C List

This list comprises of people who have shown an interest in the breed and have the support of The Portuguese Water Dog Club of Great Britain.

NAME

Butters Mrs
Jay Mrs. E
Lauder Mr. R
Munro Mr.T
Richards Mrs. F
Saxton Mrs. E *

B List

This list comprises of people who, in the opinion of The Portuguese Water Dog Club of Great Britain, are fully competent to judge thh breed at KC licensed Open Shows.

NAME

Bispham Mr. J
Brace Mr. A
Bradley Miss N *
Buckley Dr. M
Butters Mr. A
Coxall Mr. D
Cross Mr. R
Dring Mr. S *
Foss Mrs. V
Goodyear Mr. B
Green Mrs. C *
Hall Mr. S
Holbrook-O'Hara Mrs. P *
Horswell Mr. J
Kitchener Mr. D
Kraye Mrs. F
Mainland Mr. R
Mallard Mr. S
McDonald Mr. R
McManus Mr. J
Pagliero Mr. L
Reddin Mrs. R *
Sword Mr. A *
Sword Mrs. J *
Tweedie Miss S *
Wilberg Mr. S
Yeates Mrs. G
Young Mr. R *

* Denotes judges who are, in the opinion of the Club, breed specialists.

Grandway



Gemson Justin at Grandways

(Aust Ch Reelife American Dream at Gemson - Glenwhin Gabriella at Gemson)

DOB 4.10.03

Carol Green & Jayne Johns

Tel: 01242 717919

Email: grandways@blueyonder.co.uk

Grandway



Gemson Elenor at Grandways

(Glenwhin Eduardo - Gemson Coppelia)

DOB 18.9.99

Carol Green & Jayne Johns

Tel: 01242 717919

Email: grandways@blueyonder.co.uk

Grandway



Grandways Firewater at Gemson

(Glenwhin Cafezinho at Gemson - Elmley Muddy Waters at Grandways)

DOB 1.1.95

Top PWD in 2000 and Top Veteran in 2002, 2003, 2004, 2005.

Carol Green

Tel: 01242 717919

Email: grandways@blueyonder.co.uk

Grandway



Grandways Ravenwater

(Glenwhin Cafezinho at Gemson - Elmley Muddy Waters at Grandways)

DOB 1.1.95

Carol Green

Tel: 01242 717919

Email: grandways@blueyonder.co.uk

Traclem

What is in a Name or (Affix)

T is for Timing it had to be right

R is for Retirement I thought that I might

A is for Adventure I would give it a try

C is for Cartmel I wonder why !

L is for LOLA now what could that mean

E is for Effort or so it would seem

M was for Marc the boy in my dreams.

Thankyou Lola for giving me 5 lovely
puppies, and a joyful experience.

Jenny & Alastair Sword

Tel: 01652 648977

Traclem



Cartmel Sea Chimes

DOB 5.6.04

Chimes made her debut this year, with several first places.

Co-owned by
Alastair Sword & Pat Jones

Tel: 01652 648977

Traclem



Cartmel The Marauder

DOB 17.9.03

BOB Crufts 2005, RBD Skc May 05, RBD Darlington 05,
plus many other first places

**Owned by
Jenny & Alastair Sword**

Tel: 01652 648977

Auldhelm



Fun at the beach

Ellie Mae Bracken Leo

Gemson Florentina among Auldhelm DOB 19.9.01

Gemson Hermes among Auldhelm DOB 17.12.02

Gemson Morpheus among Auldhelm DOB 16.11.04

Ellie Mae relaxes after performing maternal duties
earlier in the year. Watch her babies in the ring in 2006.

Loved and adored by **Doreen and John Barton**

Tel: 01945 430 553

“Colnefield”

Middle Drove

St John's Fen End

Wisbech

Cams

PE14 8JP

BREGANTIA & RARJO



(photo by Alan V Walker)

Bregantia Funky Diva (Amy)

By Rarjo The Prodigy X Bregantia Oriana

Top Bitch 2005

Owned and Bred by

Rachael Reddin and Ruth Bussell

Tel: 01945 440431

Email: rachael-reddin@supanet.com

BREGANTIA & RARJO



(photo by Alan V Walker)

Bregantia The X Factor at Winterkloud (Alfie)

By Aus Ch Konkkaronkan Finnish Dream at Gemson X Bregantia Strut Your Stuff

Top Puppy 2005

Owned by Miss Sarah McGill

Bred by Rachael Reddin and Ruth Bussell

Tel: 01945 440431

Email: rachael-reddin@supanet.com



Gemson Kabuki (Freddie)

Sire: Aust. Ch Konkkaronkan Finnish Dream at Gemson

Dam: Gemson Coppelia

Brown and White Dog DOB 17.2.04

1st Working Puppy & Puppy Group One, WCDC; Sept 2004

1st PWD Open and BOB, SWW&PBA; September 2004

1st AVNSC Open, City of Bristol CS; February 2005

1st PWD JD Birmingham National; May 2005

1st PWD Open and BOB, SWW&PBA; May 2005

1st PWD JD Windsor; July 2005

1st PWD JD SWKC; July 2005

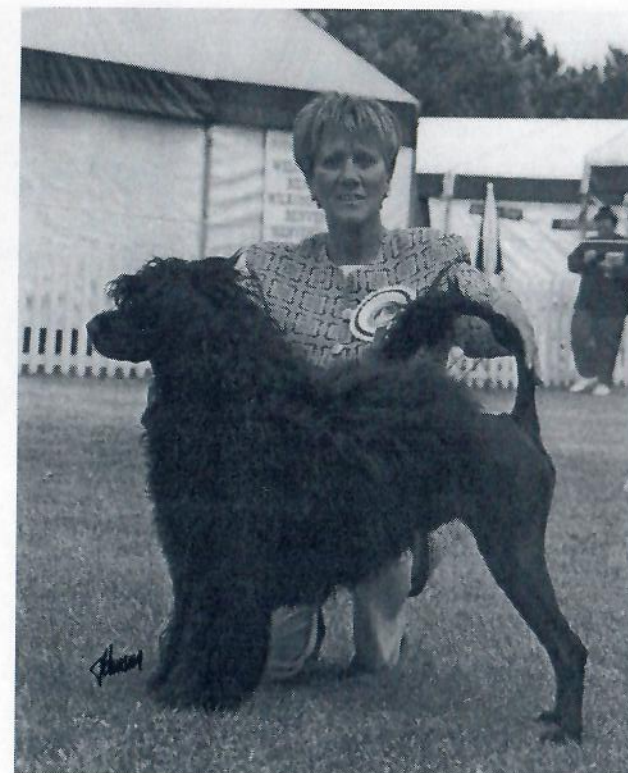
1st PWD PGD WKC; August 2005

This fabulous young dog has never been out of the placings in his short showing career – Well Done Freddie.

Owned and handled by Carole Keight

Gemson

(since 1987)



Gemson Esperanto (Henry)

DOB 18.9.2000

Sire: Glenwhin Eduardo

Dam: Gemson Coppelia

KC/BVA Hip Score 10:6 = 16

Optigen A

Jayne Johns

www.GemsonPWD.com

Gemson

(since 1987)



Gemson Esperanto (Henry)

BOB Crufts in 2004

The sweetest natured dog with a zest for life.

Jayne Johns

www.GemsonPWD.com

Gemson

(since 1987)



Konkkaronkan Finnish Dream at Gemson (Erik)
(photo at 6 months)

DOB 28.11.2000

Sire: Nor, Fin, Dan, Est Ch American Dancers Flying Dutchman (Optigen A)

Dam: Yelsek Mary Celeste at Gemson (Optigen A)

Jayne Johns

www.GemsonPWD.com

Gemson

(since 1987)



Aust Ch Konkaronkan Finnish Dream at Gemson (Erik)

Erik got his Australian title when down under on a "Business" trip in 2002, and in 2 trips to Ireland (2004 and 2005) needs just 1 more point to his Irish title.

Erik also passed his KC Canine Good Citizen Bronze Award at Birmingham Champ Show 2005.

Jayne Johns

www.GemsonPWD.com

Gemson

(since 1987)



Gemson Kristina (Buffy)

DOB 17.2.2004

Sire: Aust Ch Konkaronkan Finnish Dream at Gemson

Dam: Gemson Coppelia

Buffy had a prelim hip X-ray at 6 months old which looked excellent and is going for the KC/BVA Hip Score 1st October 2005. She will then have Optigen done.

Jayne Johns

www.GemsonPWD.com

Gemson

(since 1987)



A Gemson day out

Left to right

Grandways Fire Water at Gemson
Gemson Justin at Grandways
Aust Ch Konkkaronkan Finnish Dream at Gemson
Gemson Kristina
Gemson Elenor at Grandways
Gemson Lepidus Kimberwae
Gemson Kabuki

Jayne Johns

www.GemsonPWD.com

Gemson

(since 1987)



IN LOVING MEMORY OF

**Glenwhin Cafezinho at Gemson
and
Glenwhin Bequadro**

The dogs that started my passion for the breed all those years ago.

Jayne Johns

www.GemsonPWD.com